

PRO-Line

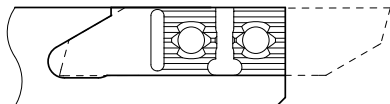
Porte-outils

Halter

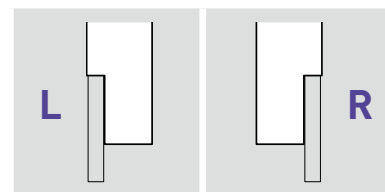
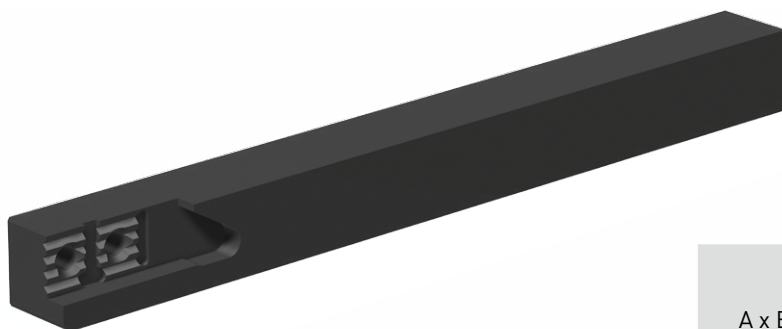
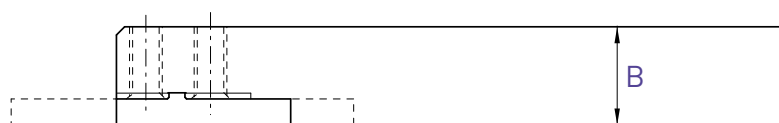
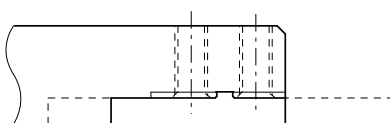
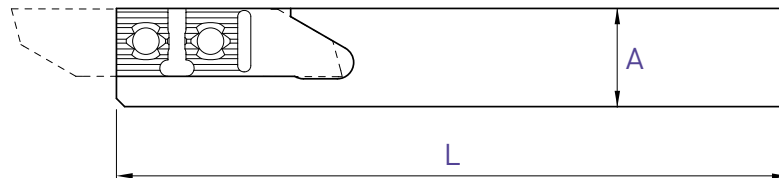
Holder

650 / 660

L



R



A x B	L	Art. N°	Art. N°
8 x 8	115	650-8	660-8
10 x 10	115	650-10	660-10
10 x 10	50	650-10-50	660-10-50
12 x 12	130	650-12	660-12
12 x 12	90	650-12-90	660-12-90
12.7 x 12.7	130	650-12.7	660-12.7
16 x 16	130	650-16	660-16
16 x 16	75	650-16-75	660-16-75
20 x 20	120	650-20	660-20

Chaque support est livré avec vis et clé.
 Jeder Halter wird mit Spannschraube(n) und Schlüssel geliefert.
 Screw(s) and key are included with each tool holder.

Porte-outils

Coupe à droite déportée

Halter

Versetztes Rechtsschneiden

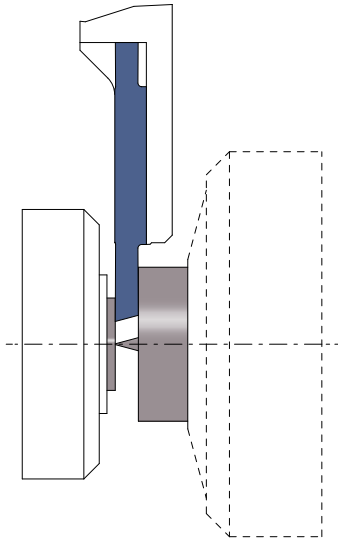
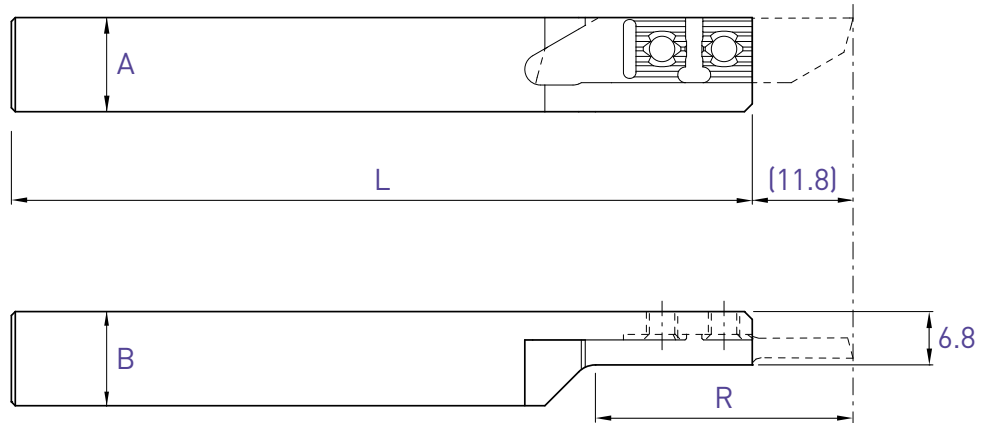
Holder


Right cut off line

650-RC

Utiliser des plaquettes type 651R
WSP Typ 651R verwenden
Use inserts type 651R

Voir dès page 36
Siehe ab Seite 36
See from page 36



 L (R) Coupe à droite déportée Versetztes Rechtsschneiden Right cut off line			
A x B	R	L	Art. N°
10 x 10	32	115	650RC-10
12 x 12	32	130	650RC-12
16 x 16	42	130	650RC-16

Chaque support est livré avec vis et clé.
Jeder Halter wird mit Spannschraube(n) und Schlüssel geliefert.
Screw(s) and key are included with each tool holder.

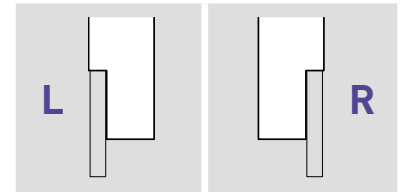
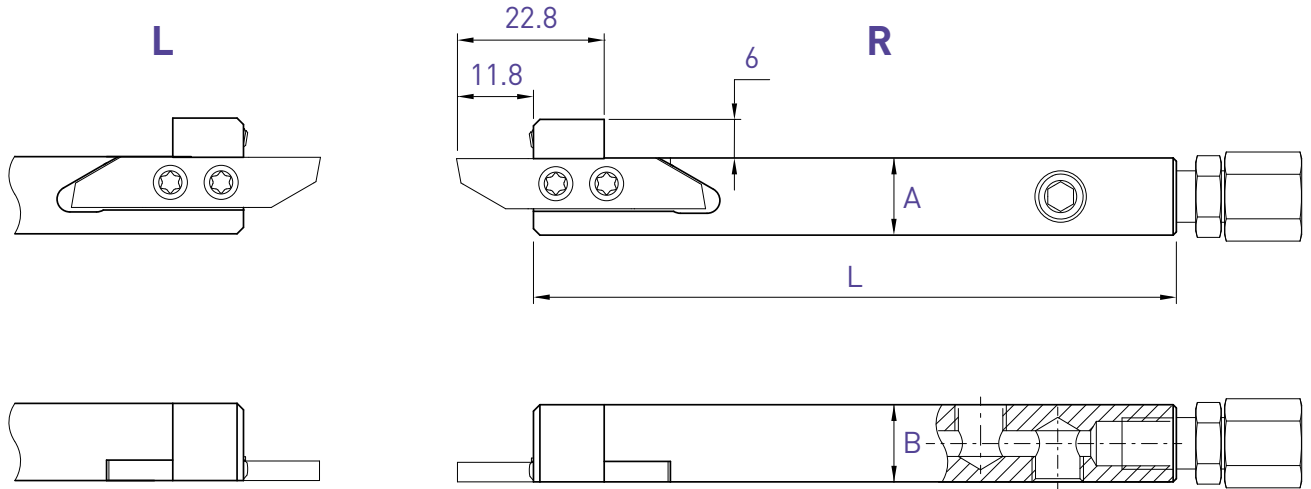
PRO-Line

Porte-outils avec arrosage intégré

Halter mit integrierter Kühlmittelzufuhr

Holder with integrated coolant supply

650-JET / 660-JET



A x B	L	Art. N°	Art. N°
10 x 12	100	650-1012-JET	660-1012-JET
12 x 12	100	650-12-JET	660-12-JET
12.7 x 12.7	100	650-12.7-JET	660-12.7-JET
16 x 16	100	650-16-JET	660-16-JET
20 x 20	100	650-20-JET	660-20-JET

Chaque support est livré avec vis, clé, raccord droit et buse d'arrosage Ø 1.5 mm.

Jeder Halter wird mit Spanschraube(n), Schlüssel, gerader Kühlmittelanschluss und Kühlmitteldüse Ø 1.5 mm geliefert.

Screw(s), key, straight connector and coolant nozzle Ø 1.5 mm are included with each tool holder.

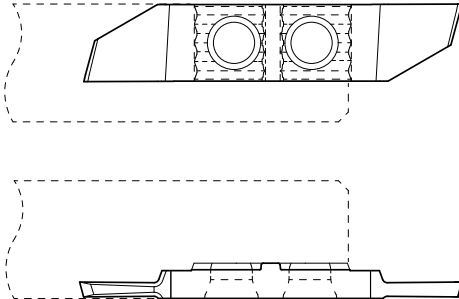
Tronçonnage

Abstechen

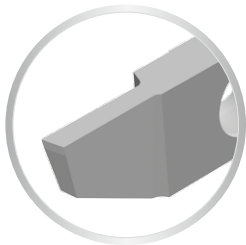
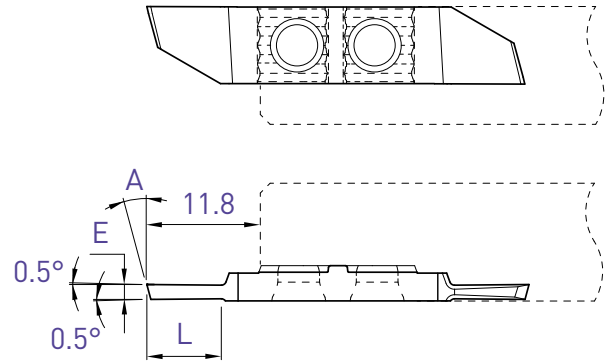
Parting off

651 / 661

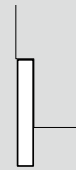
L



R



L



R



E	A	L	Art. N°	TIALN N (µk20)	Art. N°	TIALN N (µk20)
0.8	20°	5	651-0.8-20°	■ ■	661-0.8-20°	■ ■
1.0	15°	5	-		661-1.0-15°	■ ■
1.0	20°	5	651-1.0-20°	■ ■	661-1.0-20°	■ ■
1.2	15°	5	-		661-1.2-15°	■ ■
1.2	20°	5	651-1.2-20°	■ ■	661-1.2-20°	■ ■
1.5	15°	7.5	651-1.5-15°	■ ■	661-1.5-15°	■ ■
1.5	20°	7.5	-		661-1.5-20°	■ ■
1.8	15°	9	651-1.8-15°	■ ■	661-1.8-15°	■ ■
2.0	15°	11	651-2.0-15°	■ ■	661-2.0-15°	■ ■
2.5	15°	11	651-2.5-15°	■ ■	661-2.5-15°	■ ■

PRO-Line

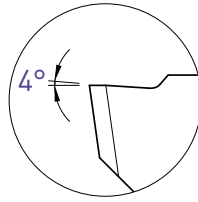
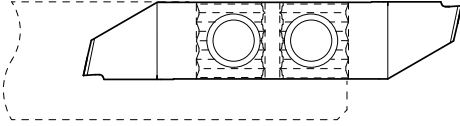
Tronçonnage

Abstechen

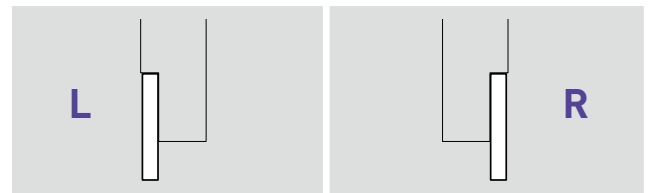
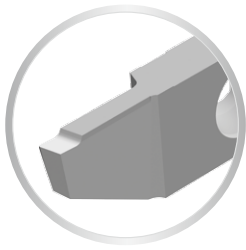
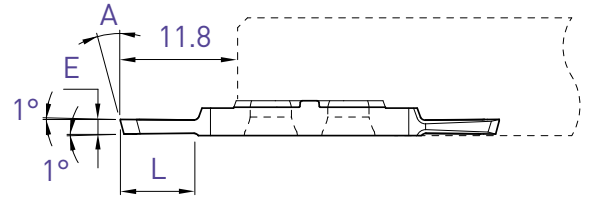
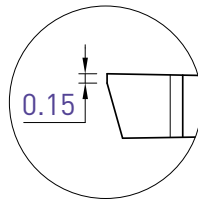
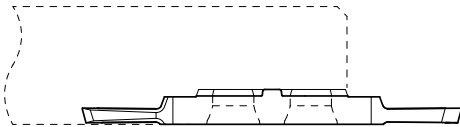
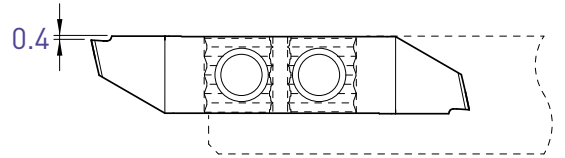
Parting off

651XF / 661XF

L



R



E	A	L	Art. N°	TiAlN N (µk20)	Art. N°	TiAlN N (µk20)
1.5	15°	7.5	651XF-1.5	■ ■	661XF-1.5	■ ■
2.0	15°	11	651XF-2.0	■ ■	661XF-2.0	■ ■

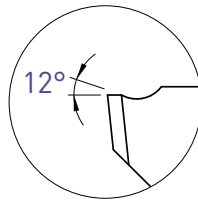
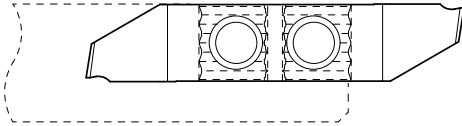
Tronçonnage

Abstechen

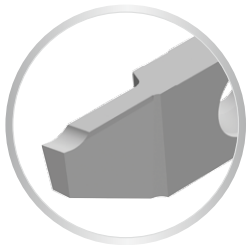
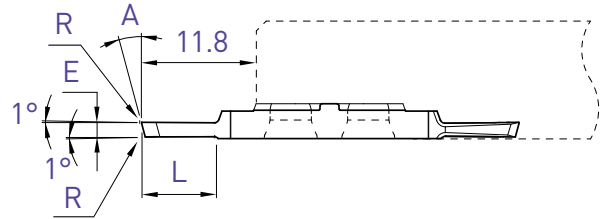
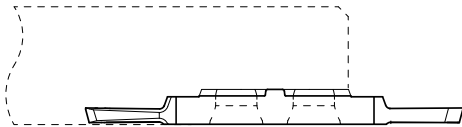
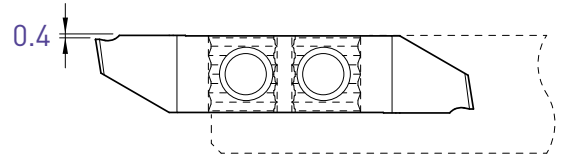
Parting off

651X12 / 661X12

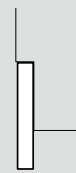
L



R



L



R



E	A	L	R	Art. N°	TIALN N (µk20)	Art. N°	TIALN N (µk20)
1.0	15°	5	0.03	651X12-1.0	■ ■	661X12-1.0	■ ■
1.5	15°	7.5	0.03	651X12-1.5	■ ■	661X12-1.5	■ ■
2.0	15°	11	0.03	651X12-2.0	■ ■	661X12-2.0	■ ■

PRO-Line

Tronçonnage

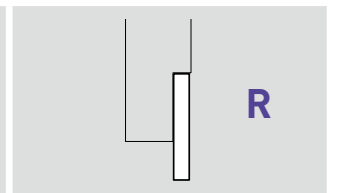
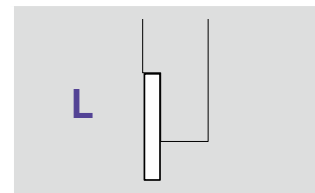
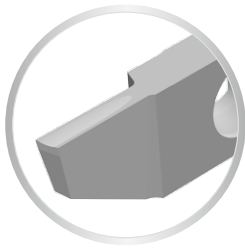
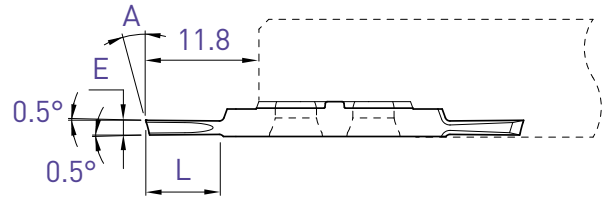
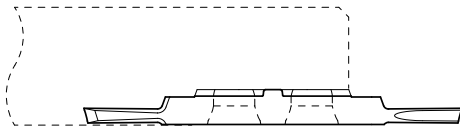
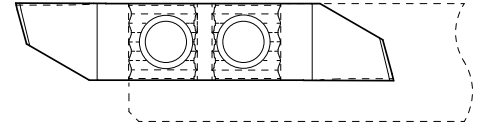
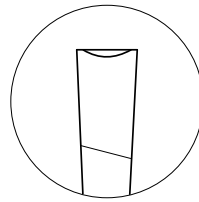
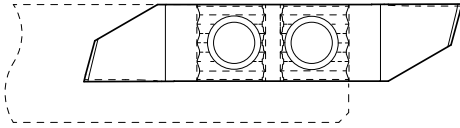
Abstechen

Parting off

651U / 661U

L

R



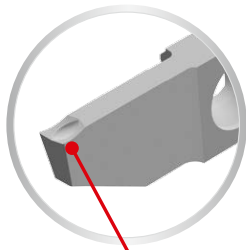
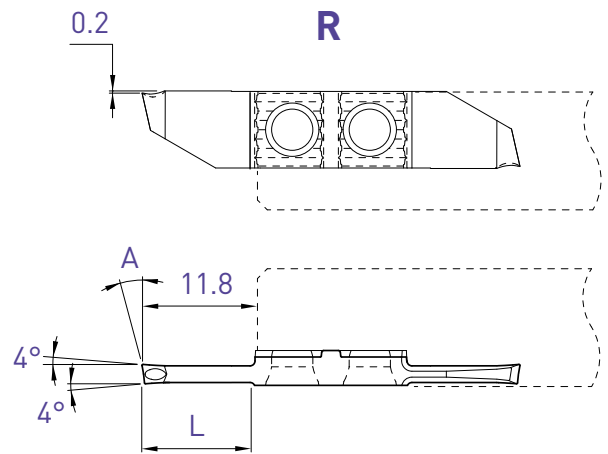
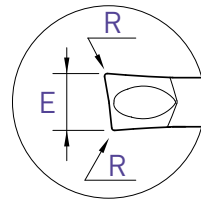
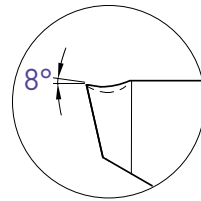
E	A	L	Art. N°	TiAlN N (µk20)	Art. N°	TiAlN N (µk20)
1.5	15°	7.5	651U-1.5	■ ■	661U-1.5	■ ■
2.0	15°	11	651U-2.0	■ ■	661U-2.0	■ ■

Tronçonnage

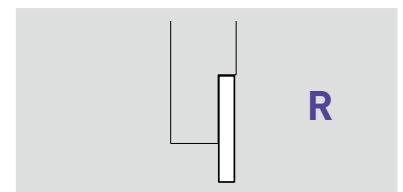
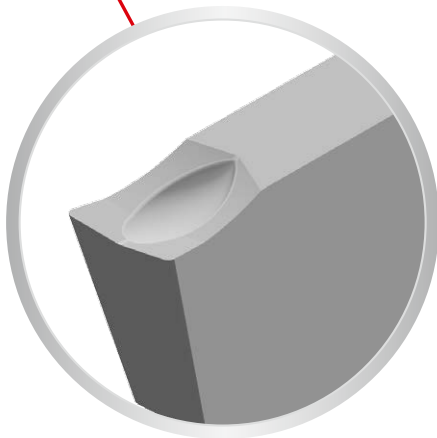
Abstechen

Parting off

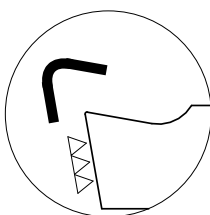
661ZU



Pour un meilleur contrôle des copeaux
Für eine bessere Spankontrolle
For a better chip-control



E	A	L	R	Art. N°	TiAlN N (µk20)
2.0	8°	11	0.10	661ZU8-2.0-8°-R10	■



Arête de coupe honée
Gehonte Schneidkante
Honed edge

f min: 0.02 mm/U

Tronçonnage

Abstechen

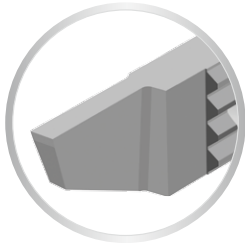
Parting off

Coupe déportée

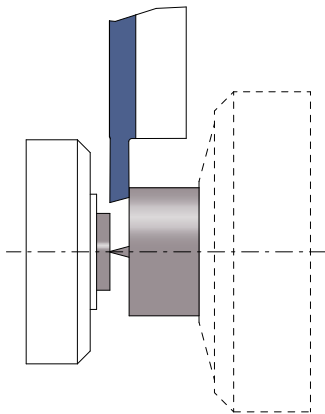
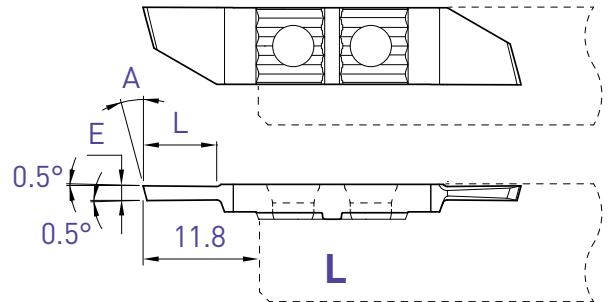
Versetztes Schneiden

Cut off line

651R



Cut R



L (R)

Coupe à droite déportée
Versetzttes Rechtsschneiden
Right cut off line

E	A	L	Art. N°	TiAlN	N (µk20)
1.0	15°	5	651R-1.0-15°	■	■
1.2	15°	5	651R-1.2-15°	■	■
1.5	15°	7.5	651R-1.5-15°	■	■
2.0	15°	11	651R-2.0-15°	■	■
2.5	15°	11	651R-2.5-15°	■	■

Tronçonnage

Coupe déportée

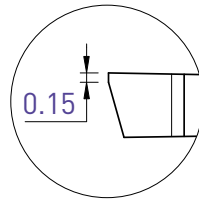
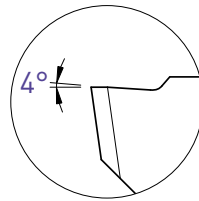
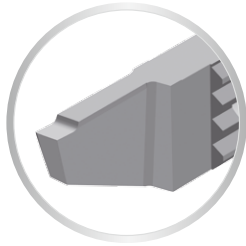
Abstechen

Versetztes Schneiden

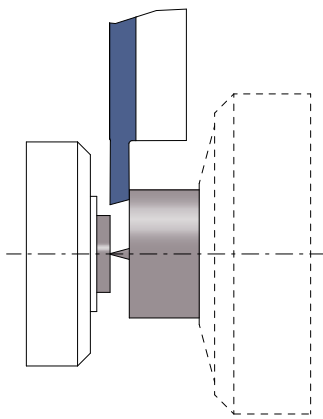
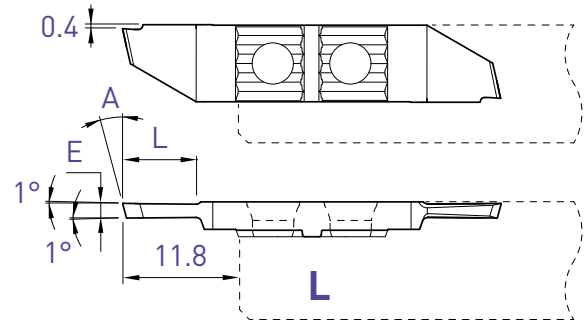
Parting off

Cut off line

651RXF



Cut R



L (R)

Coupe à droite déportée
Versetztes Rechtsschneiden
Right cut off line

E	A	L	Art. N°	TiALN	N (µk20)
1.5	15°	7.5	651RXF-1.5	■	■
2.0	15°	11	651RXF-2.0	■	■

Tronçonnage

Coupe déportée

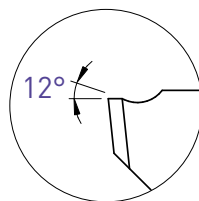
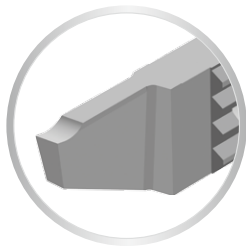
Abstechen

Versetztes Schneiden

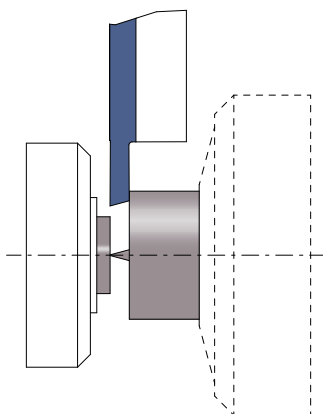
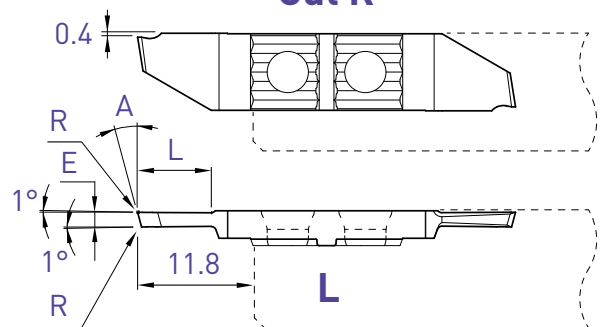
Parting off

Cut off line

651RX12



Cut R



L (R)

Coupe à droite déportée
Versetztes Rechtsschneiden
Right cut off line

E	A	L	R	Art. N°	TiALN	N (µk20)
1.5	15°	7.5	0.03	651RX12-1.5	■	■
2.0	15°	11	0.03	651RX12-2.0	■	■

■ = disponible / verfügbar / available

□ = selon disponibilité du stock / jenach Lagerverfügbarkeit / depending the stock availability

PRO-Line

Tronçonnage

Abstechen

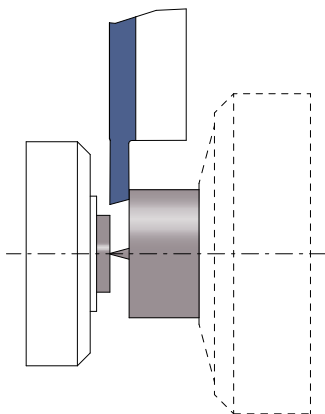
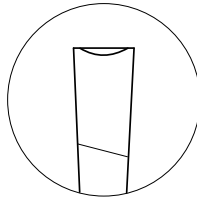
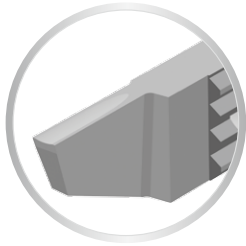
Parting off

Coupe déportée

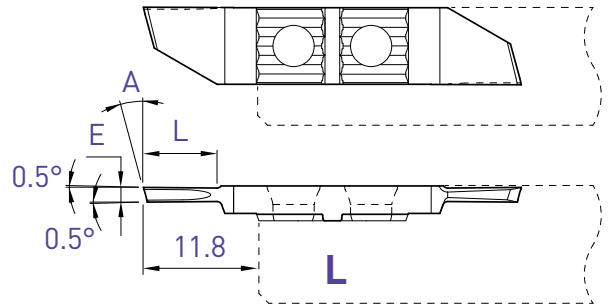
Versetztes Schneiden

Cut off line

651RU



Cut R



L (R)

Coupe à droite déportée
Versetztes Rechtsschneiden
Right cut off line

E	A	L	Art. N°	TiALN N (µk20)
1.5	15°	7.5	651RU-1.5	■ ■
2.0	15°	11	651RU-2.0	■ ■

Tronçonnage

Abstechen

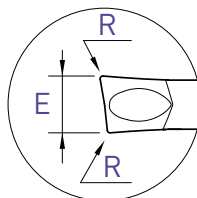
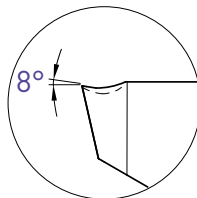
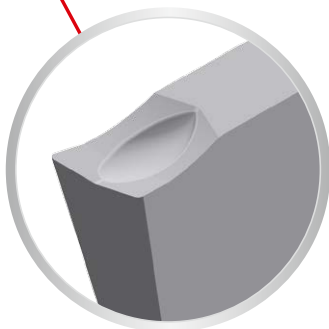
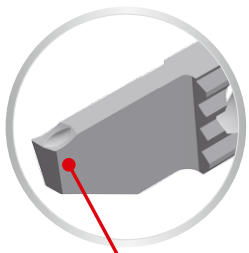
Parting off

Coupe déportée

Versetztes Schneiden

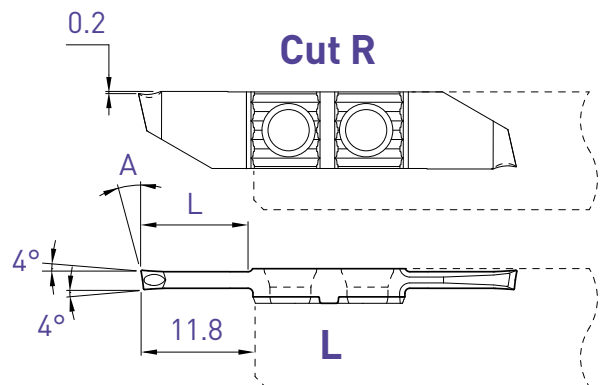
Cut off line

651RZU



Pour un meilleur contrôle des copeaux
Für eine bessere Spannkontrolle
For a better chip-control

Cut R



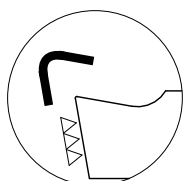
L (R)

Coupe à droite déportée
Versetztes Rechtsschneiden
Right cut off line

E	A	L	R	Art. N°	TiALN N (µk20)
2.0	8°	11	0.10	651RZU8-2.0-8°-R10	■

Arête de coupe honée
Gehonte Schneidkante
Honed edge

f min: 0.02 mm/U



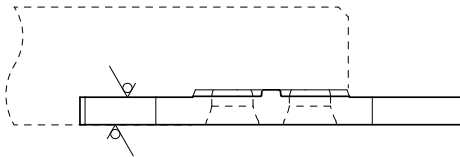
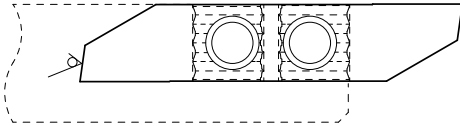
Plaquette ébauche

WSP-Rohling

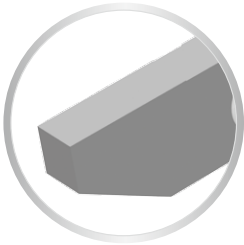
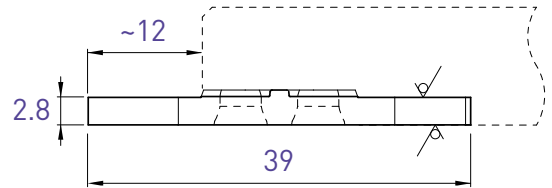
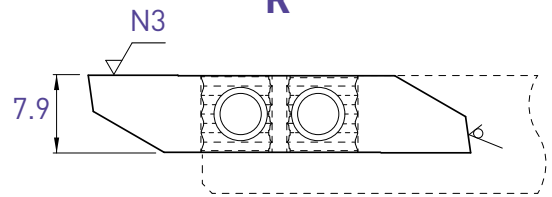
Blank insert

651-EP / 661-EP

L



R



Face de coupe polie
Polierte Schneidfläche
Cutting face polished

L		R	
Art. N°	TiAlN N (µk20)	Art. N°	TiAlN N (µk20)
651-EP	□ ■	661-EP	□ ■