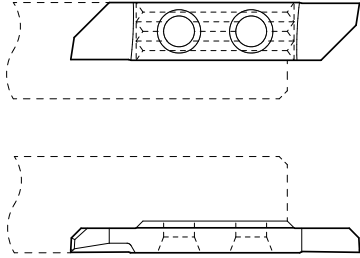


TOP-Line

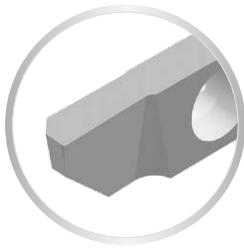
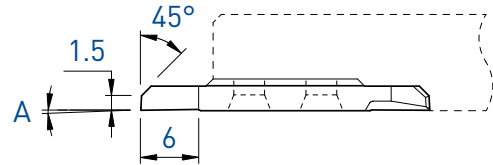
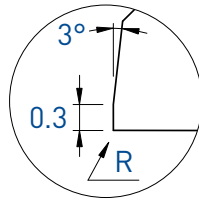
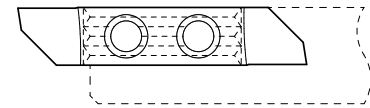
Tourneur avant
Vorwärts drehen
Front turning

732 / 742

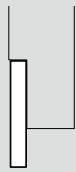
L



R



L



R

NEW

		L							R							
A	R	Art. N°	TiALN	TiN	N (µk20)	HTA	HTIN	HN (µk10)	Art. N°	TiALN	TiALX	TiN	N (µk20)	HTA	HTIN	HN (µk10)
0°	0	732	■	■	■	■	■	■	742	■	■	■	■	■	■	■
2°	0	732-2°	■	■	■	■	□	■	742-2°	■	■	■	■	■	■	■

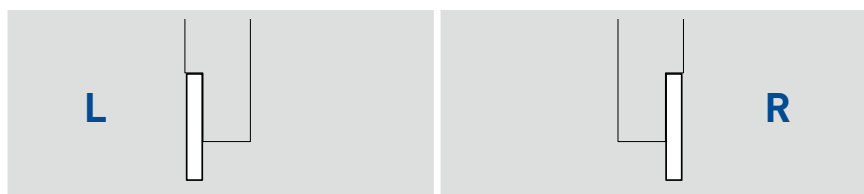
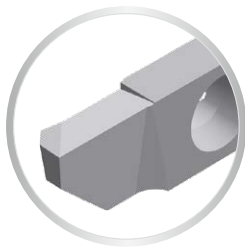
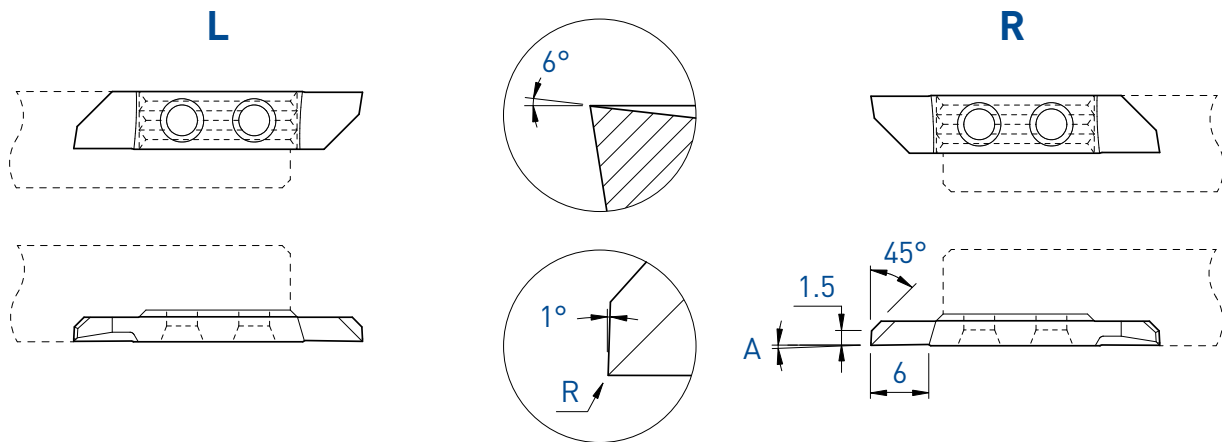
7XX-XX-B



Sur demande pour serrage type B, voir page 3
Wahlweise mit B-Spannsystem, siehe Seite 3
On request for B clamping system, see page 3

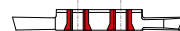
Tourneur avant
Vorwärts drehen
Front turning

732PX / 742PX



			L			R									
A	R	Art. N°	TiALN	TiN	N (µk20)	HTA	HTIN	HN (µk10)	Art. N°	TiALN	TiN	N (µk20)	HTA	HTIN	HN (µk10)
0°	0	732PX	■	■	■				742PX	■	■	■			

7XX-XX-B

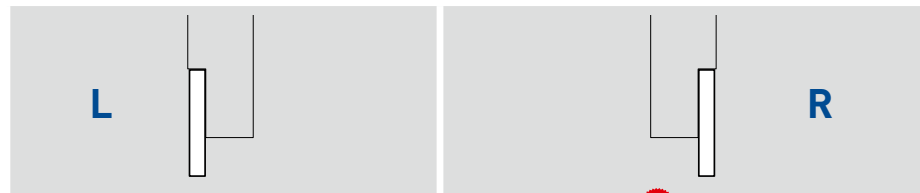
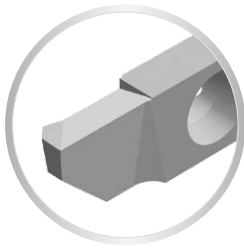
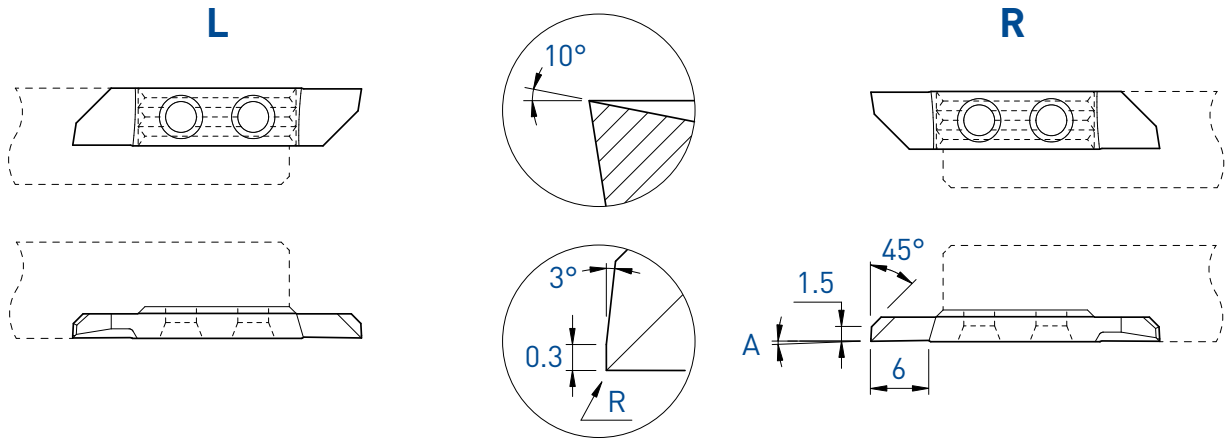


Sur demande pour serrage type B, voir page 3
 Wahlweise mit B-Spannsystem, siehe Seite 3
 On request for B clamping system, see page 3

TOP-Line

Tourneur avant
Vorwärts drehen
Front turning

732X / 742X



			L						R							
A	R	Art. N°	TiAlN	TiN	N (µk20)	HTA	HTiN	HN (µk10)	Art. N°	TiAlN	TiAlX	TiN	N (µk20)	HTA	HTiN	HN (µk10)
0°	0	732X	■	■	■	■	■	■	742X	■	■	■	■	■	■	■

7XX-XX-B



Sur demande pour serrage type B, voir page 3
Wahlweise mit B-Spannsystem, siehe Seite 3
On request for B clamping system, see page 3