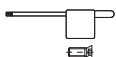


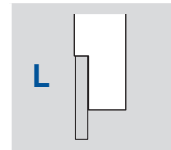
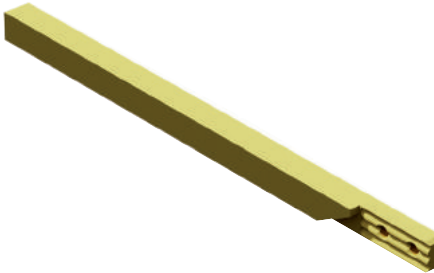
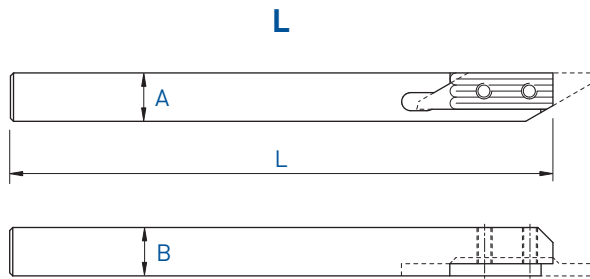
| A x B | L | Serrage Spannsystem Clamping | Art. N° | Art. N° |
|---------|-----|------------------------------------|------------------|---------------|
| 6 x 6 | 115 | A | 710-6 | - |
| 7 x 7 | 115 | A | 710-7 | 720-7 |
| 8 x 8 | 115 | A | 710-8 | 720-8 |
| 8 x 8 | 140 | A | 710-8-140 | - |
| 10 x 10 | 115 | A | 710-10 | 720-10 |
| 12 x 12 | 130 | A | 710-12 | 720-12 |



Chaque support est livré avec vis et clé.
 Jeder Halter wird mit Spannschraube(n) und Schlüssel geliefert.
 Screw(s) and key are included with each tool holder.

Porte-outils en métal lourd anti-vibratoire
 Schwingungsdämpfende Schwermetallhalter
 Low vibration heavy metal holders

710-NOVIBRA

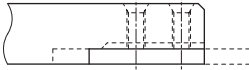
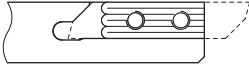


| A x B | L | Serrage Spannsystem Clamping | Art. N° |
|-------|-----|------------------------------------|---------------|
| 6 x 6 | 115 | A | 710-6-NOVIBRA |
| 7 x 7 | 115 | A | 710-7-NOVIBRA |
| 8 x 8 | 115 | A | 710-8-NOVIBRA |

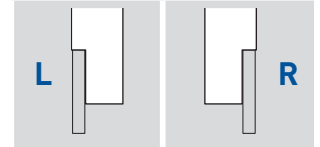
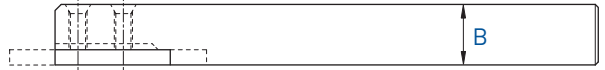
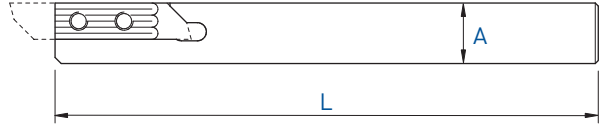


Chaque support est livré avec vis et clé.
 Jeder Halter wird mit Spannschraube(n) und Schlüssel geliefert.
 Screw(s) and key are included with each tool holder.

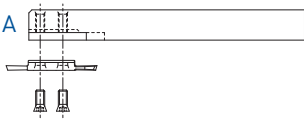
L



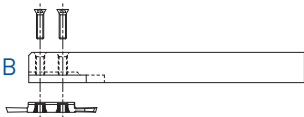
R



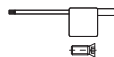
Serrage standard A
Standard Spannsystem A
Standard clamping system A



Serrage B
Spannsystem B
Clamping system B



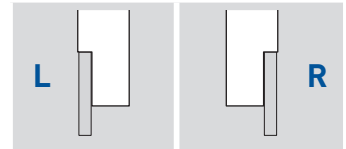
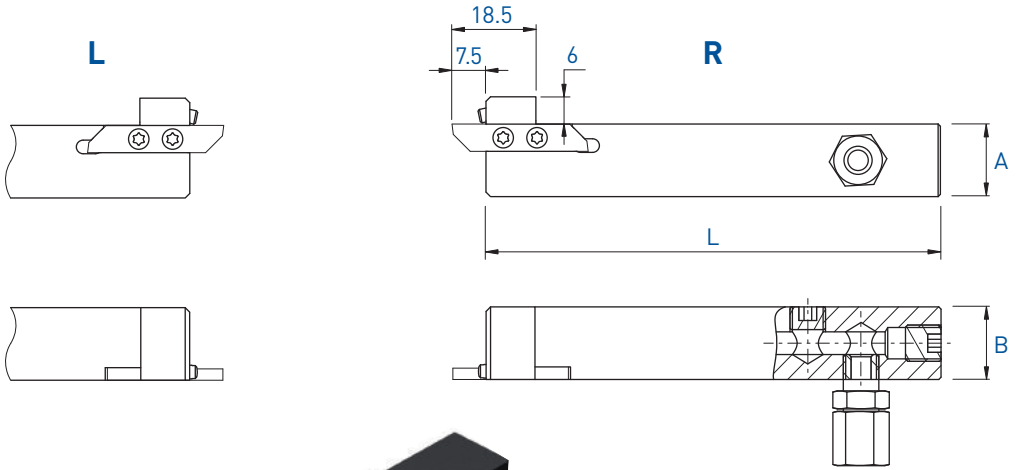
| A x B | L | Serrage Spannsystem Clamping | Art. N° | Art. N° |
|-------------|-----|------------------------------------|-----------|-----------|
| 7 x 7 | 115 | A | 730-7 | 740-7 |
| 8 x 8 | 115 | A + B | 730-8 | 740-8 |
| 8 x 8 | 140 | A + B | 730-8-140 | - |
| 10 x 10 | 115 | A + B | 730-10 | 740-10 |
| 10 x 10 | 50 | A + B | 730-10-50 | 740-10-50 |
| 12 x 12 | 130 | A + B | 730-12 | 740-12 |
| 12 x 12 | 90 | A + B | 730-12-90 | 740-12-90 |
| 12.7 x 12.7 | 130 | A + B | 730-12.7 | 740-12.7 |
| 16 x 16 | 130 | A + B | 730-16 | 740-16 |
| 16 x 16 | 75 | A + B | 730-16-75 | 740-16-75 |
| 20 x 20 | 120 | A + B | 730-20 | 740-20 |



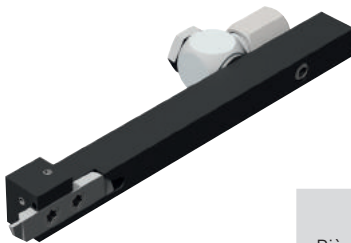
Chaque support est livré avec vis et clé.
Jeder Halter wird mit Spannschraube(n) und Schlüssel geliefert.
Screw(s) and key are included with each tool holder.

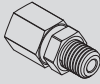



Porte-outils avec arrosage intégré
 Halter mit integrierter Kühlmittelzufuhr
 Holders with integrated coolant supply

730-JET / 740-JET



| A x B | L | Serrage Spannsystem Clamping | Art. N° | Art. N° |
|-------------|-----|------------------------------------|--------------|----------------------------|
| 8 x 10 | 100 | A + B | - | 740-0810-JET |
| 10 x 12 | 100 | A + B | 730-1012-JET | 740-1012-JET |
| 10 x 12 | 80 | A + B | - | 740-1012-80-JET new |
| 12 x 12 | 100 | A + B | 730-12-JET | 740-12-JET |
| 12.7 x 12.7 | 100 | A + B | 730-12.7-JET | 740-12.7-JET |
| 16 x 16 | 100 | A + B | 730-16-JET | 740-16-JET |
| 20 x 20 | 100 | A + B | 730-20-JET | 740-20-JET |

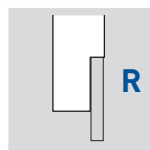
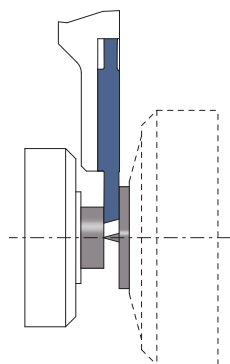
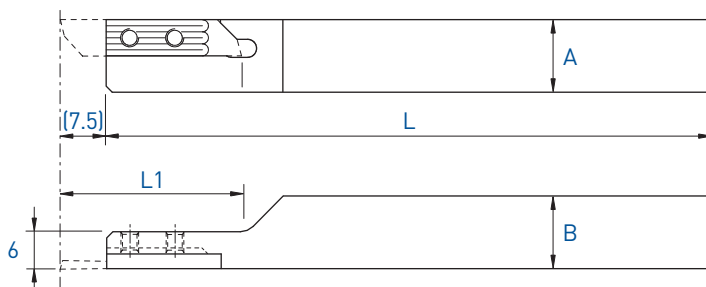


| Pièces de rechange Ersatzteile Spare parts |  |  | Buse Düse Nozzle  | Option  |
|--|---|---|---|---|
| | Art. N° | Art. N° | Art. N° | Art. N° |
| 740-0810-JET | J-M5-D5 | JB-M5 | - | JC-M5-D5 |
| 730-JET / 740-JET | J-M8X1-D6 | JB-M8X1 | JJ-M3X6-D1.5 | - |

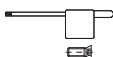
Chaque support est livré avec vis et clé.
 Jeder Halter wird mit Spannschraube(n) und Schlüssel geliefert.
 Screw(s) and key are included with each tool holder.



R



| A x B | L | L1 | Serrage Spannsystem Clamping | Art. N° |
|---------|-----|----|------------------------------------|-----------------|
| 8 x 8 | 115 | 24 | A | 740-C-8 |
| 10 x 10 | 115 | 24 | A | 740-C-10 |
| 12 x 12 | 130 | 30 | A | 740-C-12 |
| 16 x 16 | 130 | 40 | A | 740-C-16 |



Chaque support est livré avec vis et clé.
Jeder Halter wird mit Spannschraube(n) und Schlüssel geliefert.
Screw(s) and key are included with each tool holder.

Porte-outils

Halter

Holders

Coupe à droite déportée

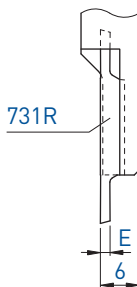
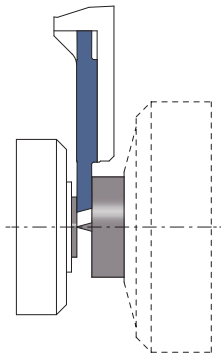
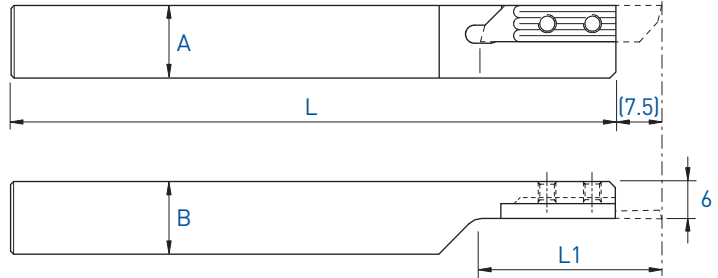
Versetztes Rechtsschneiden

Right cut off line

730RC

Utiliser des plaquettes type 731R
WSP Typ 731R verwenden
Use inserts type 731R

Voir pages 1.39 - 1.45
Siehe Seiten 1.39 - 1.45
See pages 1.39 - 1.45

**L (R)**

Coupe à droite déportée
Versetztes Rechtsschneiden
Right cut off line



| A x B | L | L1 | Art. N° |
|---------|-----|----|-----------------|
| 8 x 8 | 115 | 24 | 730RC-8 |
| 10 x 10 | 115 | 24 | 730RC-10 |
| 12 x 12 | 130 | 30 | 730RC-12 |
| 16 x 16 | 130 | 40 | 730RC-16 |



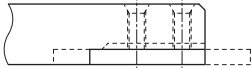
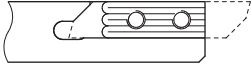
Chaque support est livré avec vis et clé.
Jeder Halter wird mit Spannschraube(n) und Schlüssel geliefert.
Screw(s) and key are included with each tool holder.

TOP-LINE

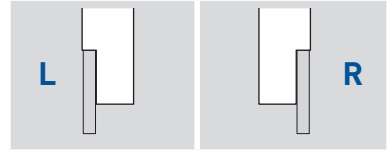
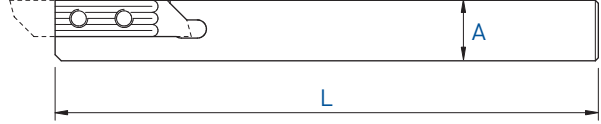
Porte-outils en métal lourd anti-vibratoire
 Schwingungsdämpfende Schwermetallhalter
 Low vibration heavy metal holders

730-NOVIBRA
 740-NOVIBRA

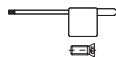
L



R



| A x B | L | Serrage Spannsystem Clamping | Art. N° | Art. N° |
|---------|-----|------------------------------------|---------------|------------------|
| 7 x 7 | 115 | A | 730-7-NOVIBRA | 740-7-NOVIBRA |
| 8 x 8 | 115 | A + B | 730-8-NOVIBRA | 740-8-NOVIBRA |
| 8 x 8 | 80 | A + B | - | 740-8-80-NOVIBRA |
| 10 x 10 | 115 | A + B | - | 740-10-NOVIBRA |
| 12 x 12 | 130 | A + B | - | 740-12-NOVIBRA |



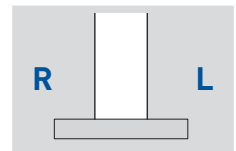
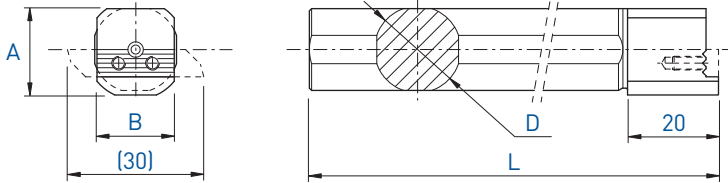
Chaque support est livré avec vis et clé.
 Jeder Halter wird mit Spannschraube(n) und Schlüssel geliefert.
 Screw(s) and key are included with each tool holder.

Porte-outils

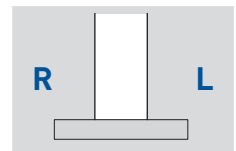
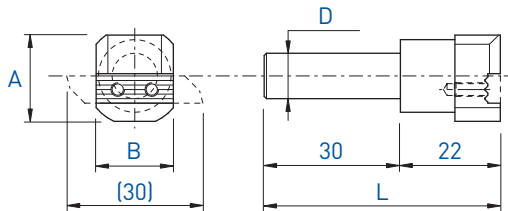
Halter

Holder

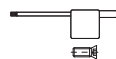
740 / 730-D



| A x B | L | D | Art. N° |
|-----------|-----|-------|------------------|
| 19 x 17 | 160 | 16 | 740/730-D16 |
| 19 x 17 | 160 | 19.05 | 740/730-D19.05 |
| 19 x 17 | 110 | 19.05 | 740/730-D19.05-S |
| 19.5 x 17 | 160 | 20 | 740/730-D20 |
| 20 x 17 | 110 | 22 | 740/730-D22 |
| 22 x 17 | 200 | 25 | 740/730-D25 |
| 22 x 17 | 200 | 25.4 | 740/730-D25.4 |

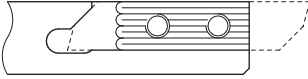


| A x B | L | D | Art. N° |
|---------|----|----|-------------|
| 19 x 17 | 52 | 10 | 740/730-D10 |

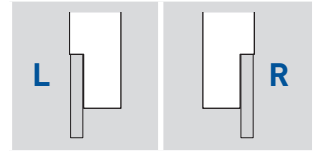
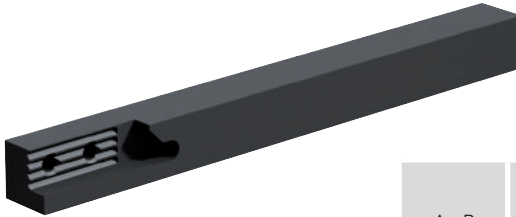
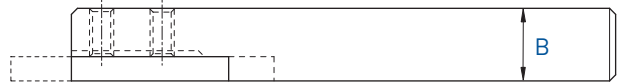
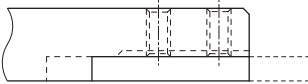
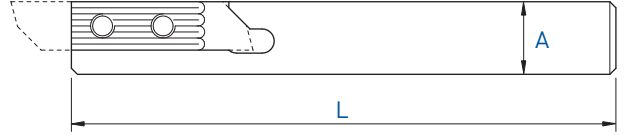


Chaque support est livré avec vis et clé.
 Jeder Halter wird mit Spannschraube(n) und Schlüssel geliefert.
 Screw(s) and key are included with each tool holder.

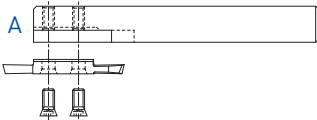
L



R

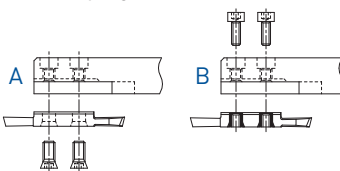


Serrage standard A
Standard Spannsystem A
Standard clamping system A



| A x B | L | Serrage Spannsystem Clamping | Art. N° | Art. N° |
|-------------|-----|------------------------------|--------------|--------------|
| 10 x 10 | 115 | A | 750-10 | 760-10 |
| 10 x 10 | 115 | A + B | 750-10-AB | 760-10-AB |
| 10 x 10 | 50 | A | 750-10-50 | 760-10-50 |
| 12 x 12 | 130 | A | 750-12 | 760-12 |
| 12 x 12 | 130 | A + B | 750-12-AB | 760-12-AB |
| 12 x 12 | 90 | A | 750-12-90 | 760-12-90 |
| 12 x 12 | 90 | A + B | 750-12-90-AB | 760-12-90-AB |
| 12.7 x 12.7 | 130 | A + B | 750-12.7 | 760-12.7 |
| 14 x 14 | 130 | A + B | 750-14 | 760-14 |
| 16 x 16 | 130 | A + B | 750-16 | 760-16 |
| 16 x 16 | 75 | A + B | 750-16-75 | 760-16-75 |
| 20 x 20 | 120 | A + B | 750-20 | 760-20 |
| 25 x 25 | 140 | A | 760/750-25 | |

Serrage A + B
Spannsystem A + B
Clamping system A + B



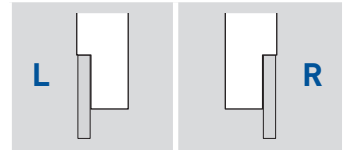
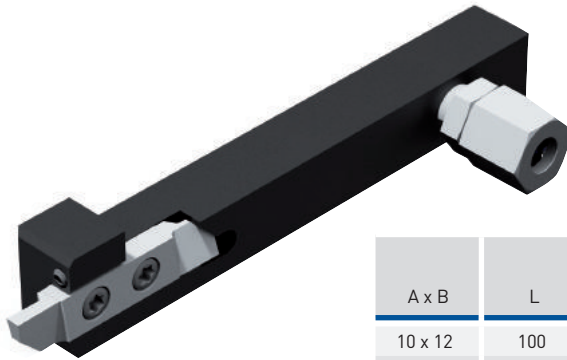
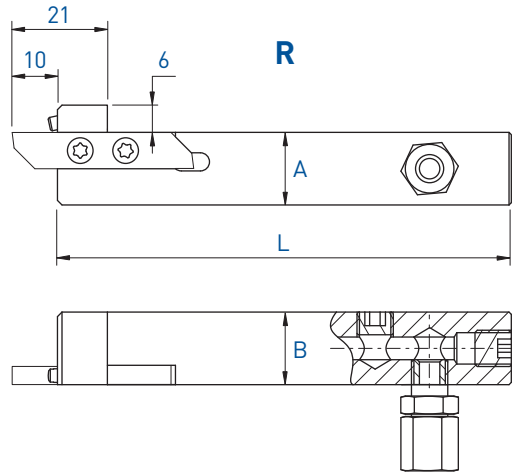
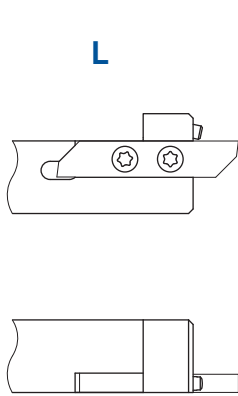
760/750-25
R + L



Chaque support est livré avec vis et clé.
Jeder Halter wird mit Spannschraube(n) und Schlüssel geliefert.
Screw(s) and key are included with each tool holder.

Porte-outils avec arrosage intégré
 Halter mit integrierter Kühlmittelzufuhr
 Holders with integrated coolant supply

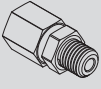


750-JET / 760-JET



| A x B | L | Serrage Spannsystem Clamping | Art. N° | Art. N° |
|-------------|-----|------------------------------------|--------------|----------------------------|
| 10 x 12 | 100 | A + B | 750-1012-JET | 760-1012-JET |
| 10 x 12 | 80 | A + B | - | 760-1012-80-JET new |
| 12 x 12 | 100 | A + B | 750-12-JET | 760-12-JET |
| 12.7 x 12.7 | 100 | A + B | 750-12.7-JET | 760-12.7-JET |
| 16 x 16 | 100 | A + B | 750-16-JET | 760-16-JET |
| 20 x 20 | 100 | A + B | 750-20-JET | 760-20-JET |



Chaque support est livré avec vis et clé.
 Jeder Halter wird mit Spannschraube(n)
 und Schlüssel geliefert.
 Screw(s) and key are included with each
 tool holder.

| Pièces de rechange Ersatzteile Spare parts |  |  | Buse Düse Nozzle  |
|--|---|---|---|
| | Art. N° | Art. N° | Art. N° |
| 750-JET / 760-JET | J-M8X1-D6 | JB-M8X1 | JJ-M3X6-D1.5 |

Porte-outils

Halter

Holder

Coupe à droite déportée

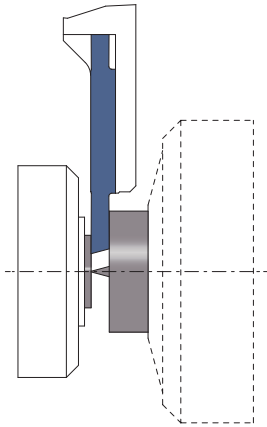
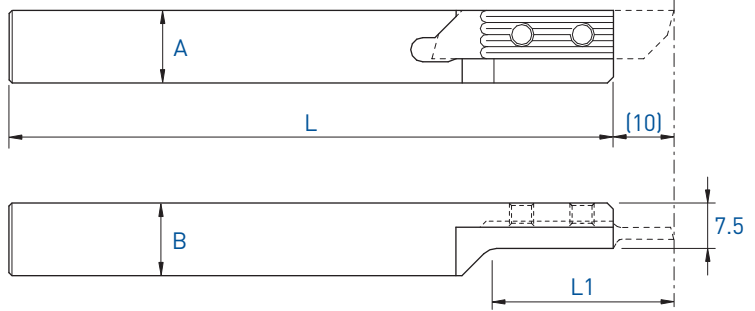
Versetztes Rechtsschneiden

Right cut off line

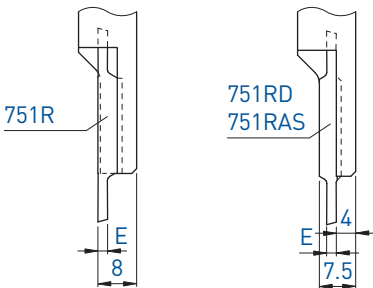
750RC

Utiliser des plaquettes type 751R
 WSP Typ 751R verwenden
 Use inserts type 751R

Voir pages 1.88 - 1.99
 Siehe Seiten 1.88 - 1.99
 See pages 1.88 - 1.99



| L (R) | | | |
|---|-----|----|-----------------|
| Coupe à droite déportée Versetztes Rechtsschneiden Right cut off line | | | |
| A x B | L | L1 | Art. N° |
| 12 x 12 | 130 | 30 | 750RC-12 |
| 16 x 16 | 130 | 40 | 750RC-16 |



(p. 1.98 - 1.99)



Chaque support est livré avec vis et clé.
 Jeder Halter wird mit Spanschraube(n) und Schlüssel geliefert.
 Screw(s) and key are included with each tool holder.

Porte-outils

Halter

Holder

Coupe à gauche déportée

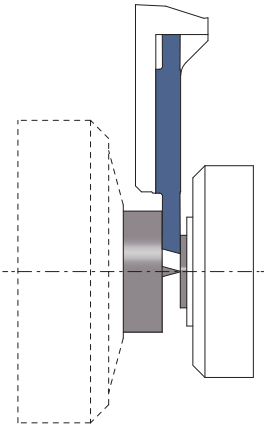
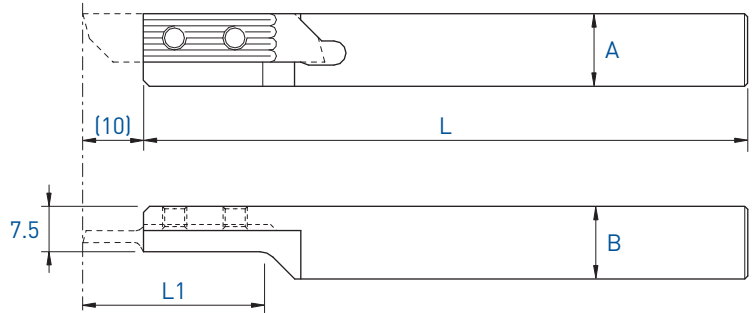
Versetztes Linksschneiden

Left cut off line

760LC

Utiliser des plaquettes type 761L
WSP Typ 761L verwenden
Use insets type 761L

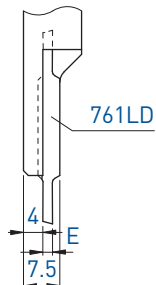
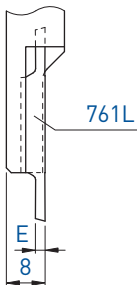
Voir pages 1.88 - 1.94 + 1.98
Siehe Seiten 1.88 - 1.94 + 1.98
See pages 1.88 - 1.94 + 1.98



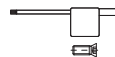
R (L)

Coupe à gauche déportée
Versetztes Linksschneiden
Left cut off line

| A x B | L | L1 | Art. N° |
|---------|-----|----|----------|
| 16 x 16 | 130 | 40 | 760LC-16 |

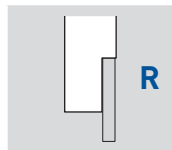
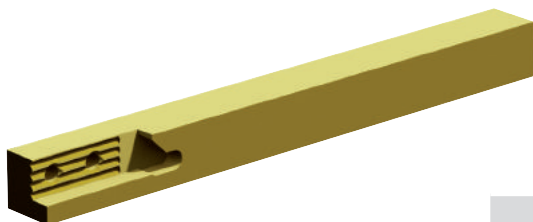
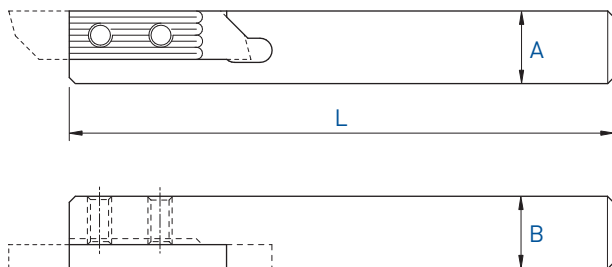


(p. 1.98)

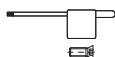


Chaque support est livré avec vis et clé.
Jeder Halter wird mit Spannschraube(n) und Schlüssel geliefert.
Screw(s) and key are included with each tool holder.

R



| A x B | L | Serrage Spannsystem Clamping | Art. N° |
|---------|-----|------------------------------------|-----------------------|
| 10 x 10 | 115 | A | 760-10-NOVIBRA |
| 12 x 12 | 130 | A | 760-12-NOVIBRA |



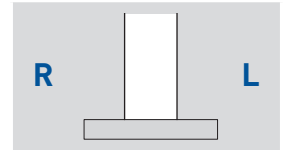
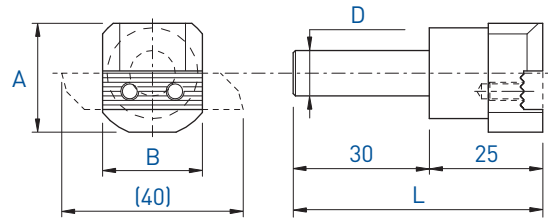
Chaque support est livré avec vis et clé.
 Jeder Halter wird mit Spannschraube(n) und Schlüssel geliefert.
 Screw(s) and key are included with each tool holder.

Porte-outils

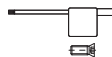
Halter

Holders

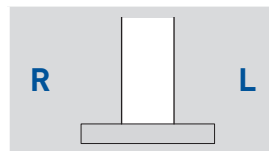
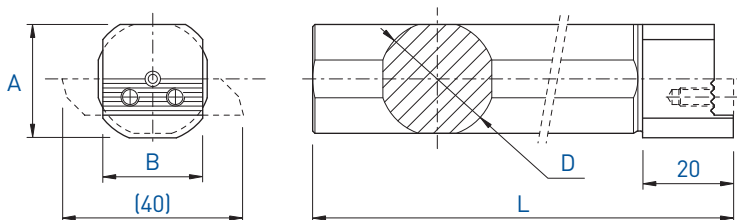
760 / 750-D10



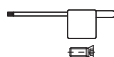
| A x B | L | D | Art. N° |
|---------|----|----|-------------|
| 24 x 22 | 55 | 10 | 760/750-D10 |



Chaque support est livré avec vis et clé.
 Jeder Halter wird mit Spannschraube(n) und Schlüssel geliefert.
 Screw(s) and key are included with each tool holder.



| A x B | L | D | Art. N° |
|---------|-----|-------|-------------------------|
| 25 x 22 | 160 | 16 | 760/750-D16 |
| 25 x 22 | 160 | 19.05 | 760/750-D19.05 |
| 25 x 22 | 110 | 19.05 | 760/750-D19.05-S |
| 25 x 22 | 160 | 20 | 760/750-D20 |
| 25 x 22 | 110 | 22 | 760/750-D22 |
| 25 x 22 | 200 | 25 | 760/750-D25 |
| 25 x 22 | 200 | 25.4 | 760/750-D25.4 |
| 25 x 22 | 125 | 25.4 | 760/750-D25.4-S |



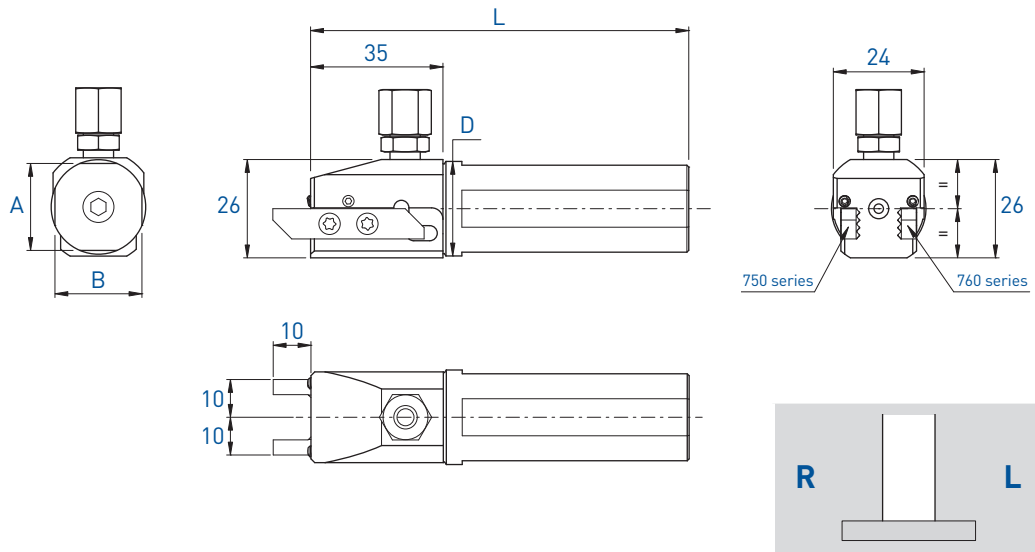
Chaque support est livré avec vis et clé.
 Jeder Halter wird mit Spannschraube(n) und Schlüssel geliefert.
 Screw(s) and key are included with each tool holder.

Porte-outils

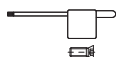
Halter

Holders

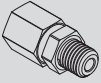


760 / 750-AX



| A x B | L | D | Art. N° |
|---------|-----|------|----------------------|
| 23 x 23 | 100 | 25 | 760/750-AX-D25-JET |
| 23 x 23 | 100 | 25.4 | 760/750-AX-D25.4-JET |



Chaque support est livré avec vis et clé.
 Jeder Halter wird mit Spannschraube(n)
 und Schlüssel geliefert.
 Screw(s) and key are included with each
 tool holder.

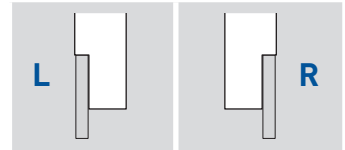
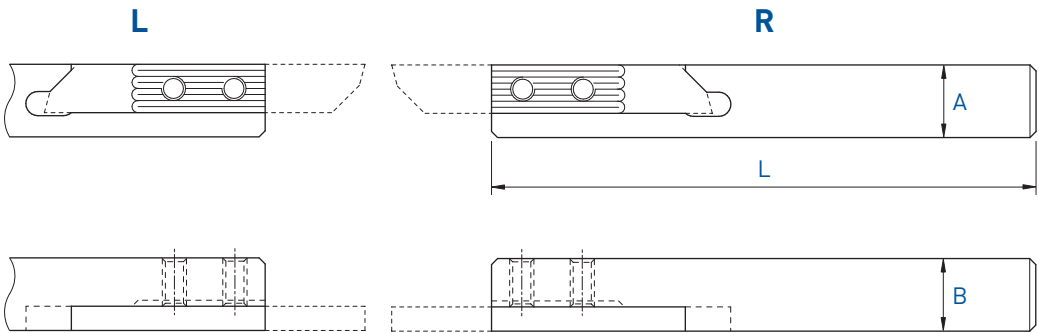
| Pièces de rechange Ersatzteile Spare parts |  |  | Buse Düse Nozzle  |
|--|---|---|---|
| | Art. N° | Art. N° | Art. N° |
| 760/750-AX | J-M8X1-D6 | JB-M8X1 | JJ-M3X6-D1.5 |

Porte-outils

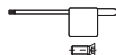
Halter

Holders

770 / 780



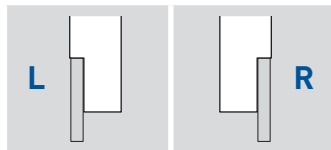
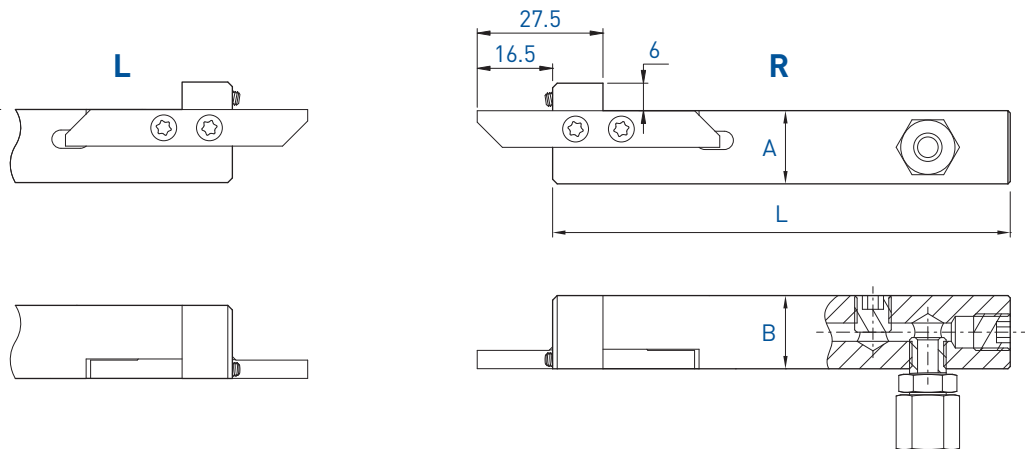
| A x B | L | Serrage Spannsystem Clamping | Art. N° | Art. N° |
|-------------|-----|------------------------------------|------------------|------------------|
| 10 x 10 | 115 | A | 770-10 | 780-10 |
| 12 x 12 | 130 | A | 770-12 | 780-12 |
| 12 x 12 | 90 | A | 770-12-90 | 780-12-90 |
| 12.7 x 12.7 | 130 | A | 770-12.7 | 780-12.7 |
| 14 x 14 | 130 | A | 770-14 | 780-14 |
| 16 x 16 | 130 | A | 770-16 | 780-16 |
| 16 x 16 | 75 | A | 770-16-75 | 780-16-75 |
| 20 x 20 | 120 | A | 770-20 | 780-20 |
| 25 x 25 | 140 | A | 770-25 | 780-25 |



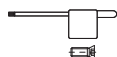
Chaque support est livré avec vis et clé.
 Jeder Halter wird mit Spannschraube(n) und Schlüssel geliefert.
 Screw(s) and key are included with each tool holder.

Porte-outils avec arrosage intégré
 Halter mit integrierter Kühlmittelzufuhr
 Holders with integrated coolant supply

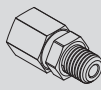


770-JET / 780-JET



| A x B | L | Serrage Spannsystem Clamping | Art. N° | Art. N° |
|---------|-----|------------------------------------|------------|------------|
| 16 x 16 | 100 | A | 770-16-JET | 780-16-JET |



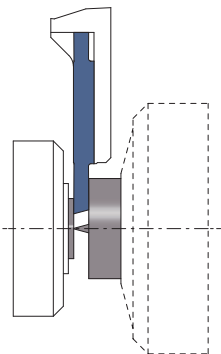
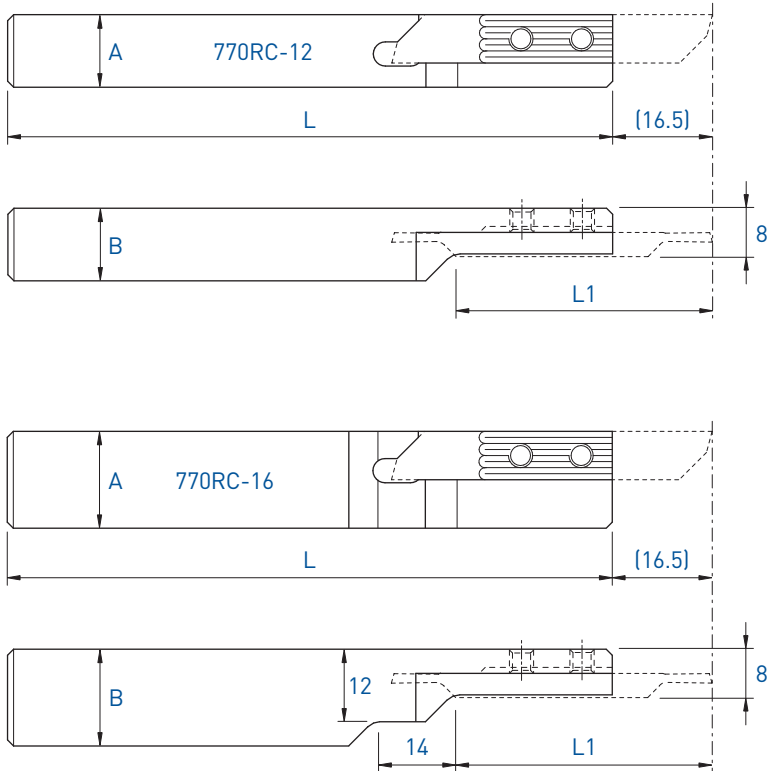
Chaque support est livré avec vis et clé.
 Jeder Halter wird mit Spannschraube(n)
 und Schlüssel geliefert.
 Screw(s) and key are included with each
 tool holder.

| Pièces de rechange Ersatzteile Spare parts |  |  | Buse Düse Nozzle  |
|--|---|--|---|
| | Art. N° | Art. N° | Art. N° |
| 770-JET / 780-JET | J-M8X1-D6 | JB-M8X1 | JJ-M3X6-D1.5 |

Porte-outils
Halter
Holders


Coupe déportée
Versetzttes Schneiden
Cut off line

770RC



Utiliser des plaquettes type 771R
WSP Typ 771R verwenden
Use inserts type 771R

Voir pages 1.138 - 1.141
Siehe Seiten 1.138 - 1.141
See pages 1.138 - 1.141

|  L (R) Coupe à droite déportée Versetztes Rechtsschneiden Right cut off line | | | | |
|---|-----|----|------------------------------------|-----------------|
| A x B | L | L1 | Serrage Spannsystem Clamping | Art. N° |
| 12 x 12 | 130 | 42 | A | 770RC-12 |
| 16 x 16 | 130 | 42 | A | 770RC-16 |



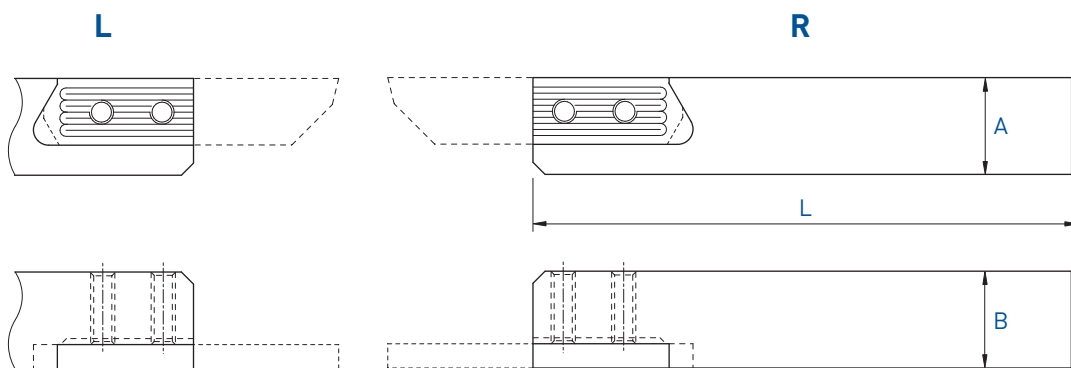
Chaque support est livré avec vis et clé.
Jeder Halter wird mit Spannschraube(n) und Schlüssel geliefert.
Screw(s) and key are included with each tool holder.

Porte-outils

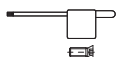
Halter

Holders

7050 / 7060



| A x B | L | Serrage Spannsystem Clamping | | |
|---------|-----|------------------------------------|-------------------|-------------------|
| | | | Art. N° | Art. N° |
| 16 x 16 | 130 | A | 7050-16 | 7060-16 |
| 16 x 16 | 75 | A | 7050-16-75 | 7060-16-75 |
| 20 x 20 | 120 | A | 7050-20 | 7060-20 |
| 25 x 25 | 140 | A | 7050-25 | 7060-25 |



Chaque support est livré avec vis et clé.
Jeder Halter wird mit Spannschraube(n) und Schlüssel geliefert.
Screw(s) and key are included with each tool holder.

■ = disponible / verfügbar / available

□ = selon disponibilité du stock / jenach Lagerverfügbarkeit / depending on stock availability

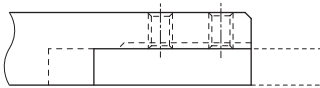
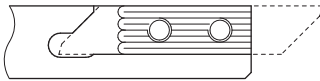
Porte-outils

Halter

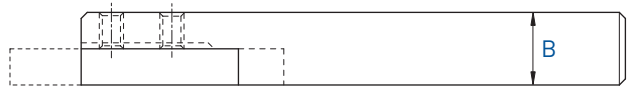
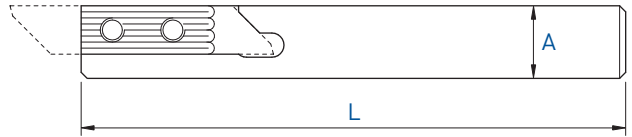
Holder

W750 / W760

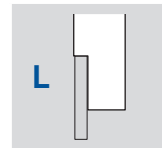
L



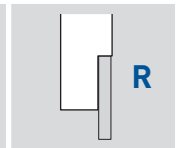
R



L



R



| A x B | L | Serrage Spannsystem Clamping | Art. N° | Art. N° |
|---------|-----|------------------------------------|----------------|----------------|
| 12 x 12 | 130 | A | W750-12 | W760-12 |
| 16 x 16 | 130 | A | W750-16 | W760-16 |
| 20 x 20 | 120 | A | W750-20 | W760-20 |



Chaque support est livré avec vis et clé.
Jeder Halter wird mit Spannschraube(n) und Schlüssel geliefert.
Screw(s) and key are included with each tool holder.

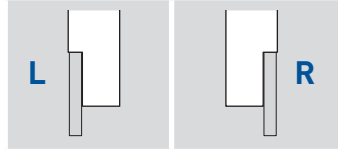
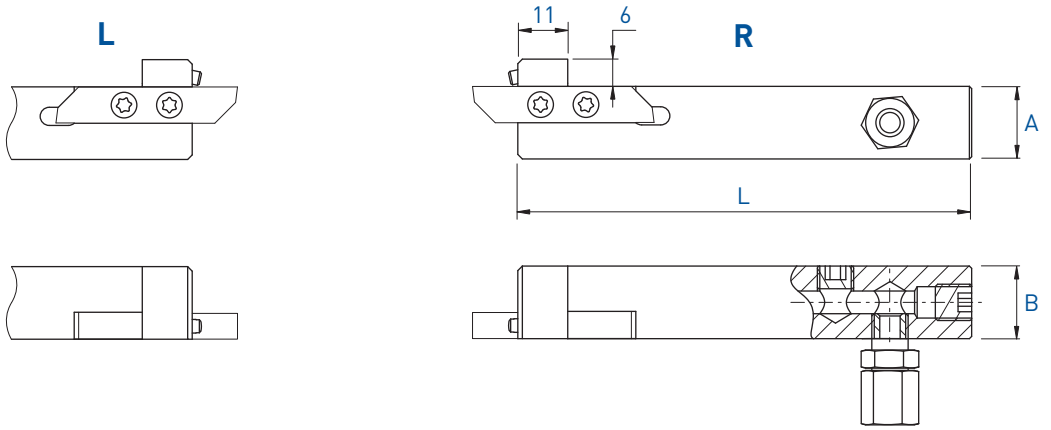
■ = disponible / verfügbar / available

□ = selon disponibilité du stock / jenach Lagerverfügbarkeit / depending on stock availability

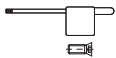
TOP-LINE

Porte-outils avec arrosage intégré
 Halter mit integrierter Kühlmittelzufuhr
 Holders with integrated coolant supply

W750-JET / W760-JET



| A x B | L | Serrage Spannsystem Clamping | Art. N° | Art. N° |
|---------|-----|------------------------------------|-------------|-------------|
| 16 x 16 | 100 | A | W750-16-JET | W760-16-JET |
| 20 x 20 | 100 | A | W750-20-JET | W760-20-JET |



Chaque support est livré avec vis et clé.
 Jeder Halter wird mit Spannschraube(n)
 und Schlüssel geliefert.
 Screw(s) and key are included with each
 tool holder.

| Pièces de rechange Ersatzteile Spare parts | Buse Düse Nozzle | | |
|--|------------------------|---------|--------------|
| | Art. N° | Art. N° | Art. N° |
| W750-JET / W760-JET | J-M8X1-D6 | JB-M8X1 | JJ-M3X6-D1.5 |