

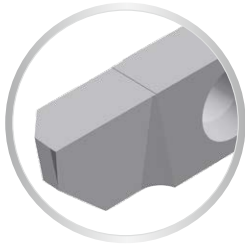
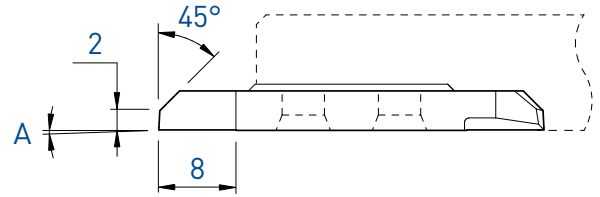
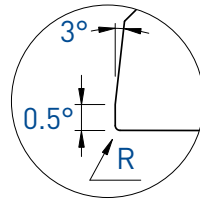
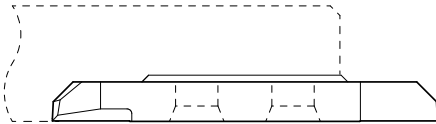
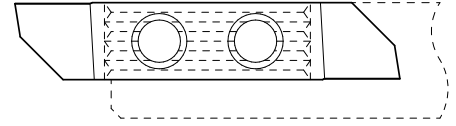
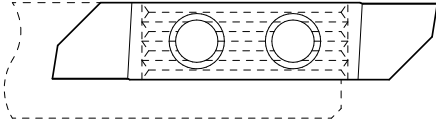
# TOP-Line

Tourneur avant  
Vorwärts drehen  
Front turning

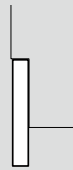
752 / 762

L

R



L

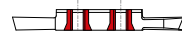


R



A	R	Art. N°	TiAlN	TiN	N (µk20)	HTA	HTiN	HN (µk10)	Art. N°	TiAlN	TiN	N (µk20)	HTA	HTiN	HN (µk10)
0°	0	752	■	■	■	■	□	■	762	■	■	■	■	□	■
0°	0.2	-							762-R20	■	■	■	■	□	■
3°	0	752-3°	■	■	■	■	□	■	762-3°	■	■	■	■	□	■

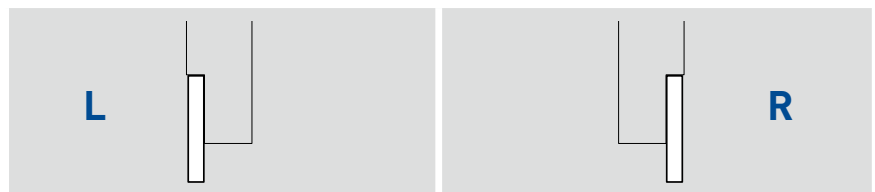
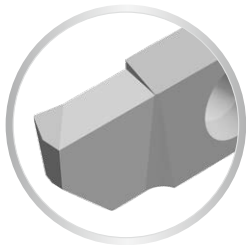
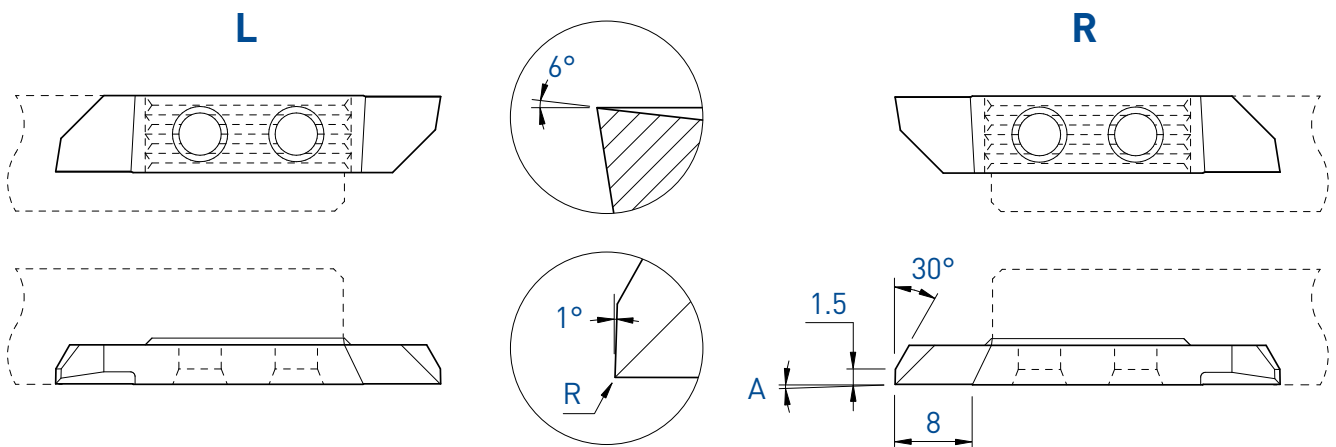
7XX-XX-B



Sur demande pour serrage type B, voir page 3  
Wahlweise mit B-Spannsystem, siehe Seite 3  
On request for B clamping system, see page 3

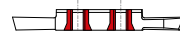
Tourneur avant  
Vorwärts drehen  
Front turning

## 752PX / 762PX



A	R	Art. N°	TiAlN	TiN	N (µk20)	HTA	HTiN	HN (µk10)	Art. N°	TiAlN	TiN	N (µk20)	HTA	HTiN	HN (µk10)
0°	0	752PX	■	■	■				762PX	■	■	■			

7XX-XX-B



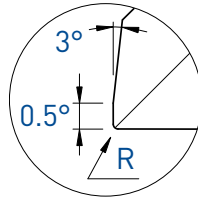
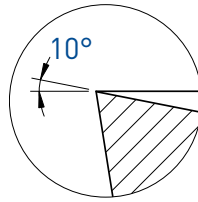
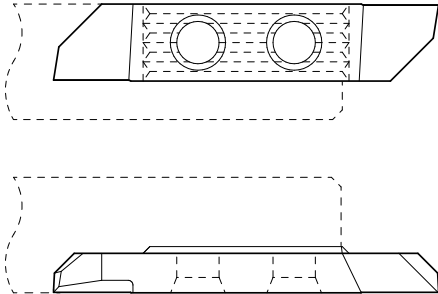
Sur demande pour serrage type B, voir page 3  
Wahlweise mit B-Spannsystem, siehe Seite 3  
On request for B clamping system, see page 3

# TOP-Line

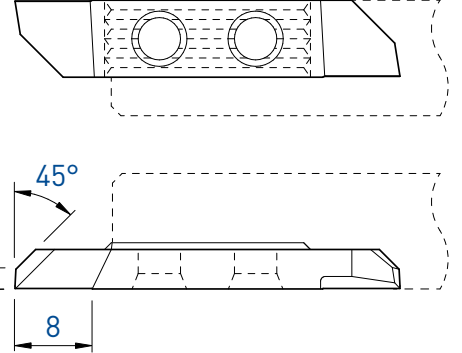
Tourneur avant  
Vorwärts drehen  
Front turning

752X / 762X

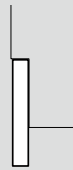
L



R



L

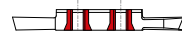


R



A	R	Art. N°	TiAlN	TiN	N (µk20)	HTA	HTiN	HN (µk10)	Art. N°	TiAlN	TiN	N (µk20)	HTA	HTiN	HN (µk10)
0°	0	752X	■	■	■	■	■	■	762X	■	■	■	■	■	■
0°	0.2	752X-R20	■	■	■				762X-R20	■	■	■	■	■	■

7XX-XX-B

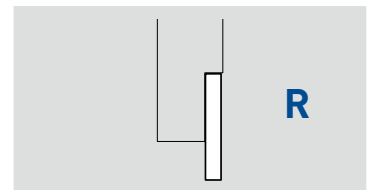
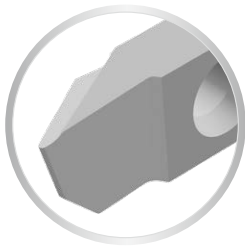
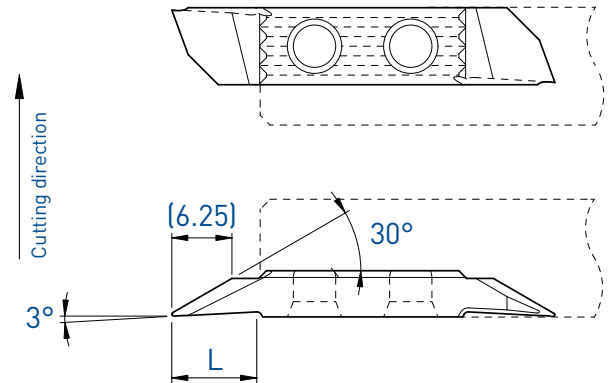
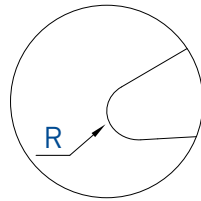
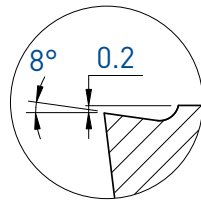


Sur demande pour serrage type B, voir page 3  
Wahlweise mit B-Spannsystem, siehe Seite 3  
On request for B clamping system, see page 3

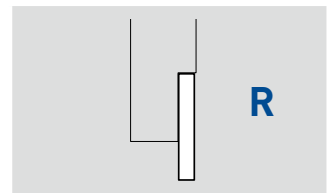
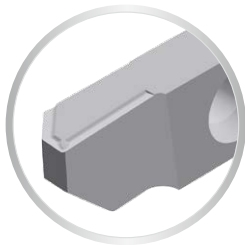
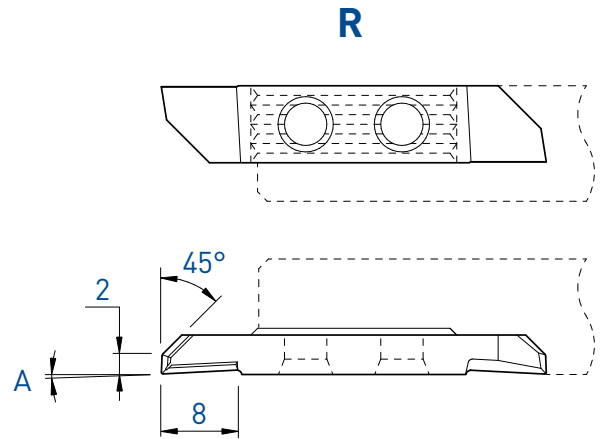
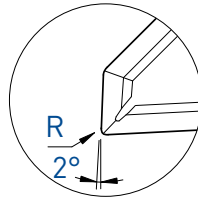
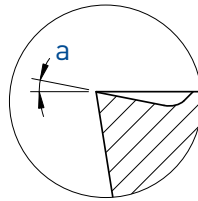
Tourneur avant  
Vorwärts drehen  
Front turning

## 762VX-800

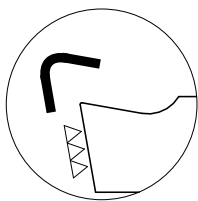
**NEW**



L	R	Art. N°	HTA	HTiN	HN (µk10)
9	0.15	762VX-800-R15	■	■	■



A	a	R	Art. N°	TiAlN	TiN	N (µk20)
3°	10°	0.08	762ZX10-R08	■	□	
3°	10°	0.2	762ZX10-R20	■	□	



Arête de coupe honée  
Gehonte Schneidkante  
Honed edge

f min: 0.02 mm/U

7XX-XX-B



Sur demande pour serrage type B, voir page 3  
Wahlweise mit B-Spannsystem, siehe Seite 3  
On request for B clamping system, see page 3

Tourneur multifonction

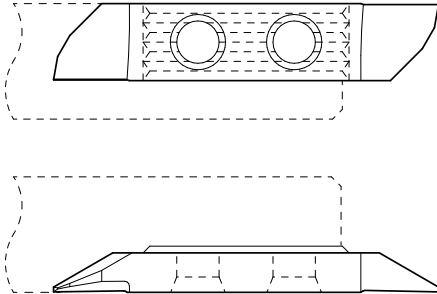
Mehrzweck Drehen

Multifunction turning

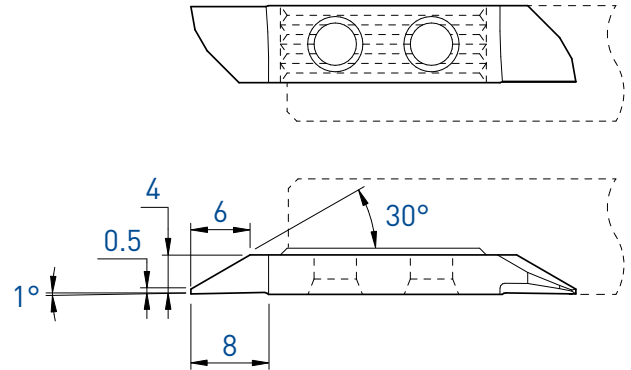
752S / 762S

753S / 763S

L



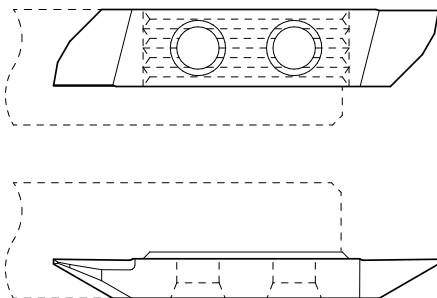
R



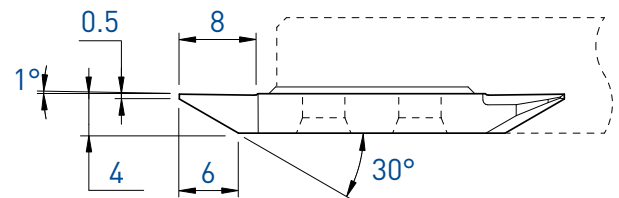
Tourneur avant  
Vorwärts drehen  
Front turning

L						R								
Art. N°	TiALN	TiN	N (µk20)	HTA	HTiN	HN (µk10)	Art. N°	TiALN	TiALX <sup>NEW</sup>	TiN	N (µk20)	HTA	HTiN	HN (µk10)
752S05	■	■	■	■	□	■	762S05	■	■	■	■	■	■	■

L



R



Tourneur arrière  
Rückwärts drehen  
Back turning

L						R								
Art. N°	TiALN	TiN	N (µk20)	HTA	HTiN	HN (µk10)	Art. N°	TiALN	TiALX <sup>NEW</sup>	TiN	N (µk20)	HTA	HTiN	HN (µk10)
753S05	■	■	■	■	■	■	763S05	■	■	■	■	■	■	■