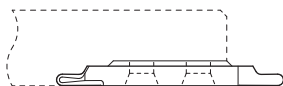
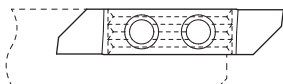
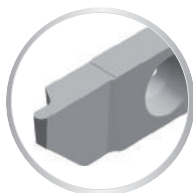
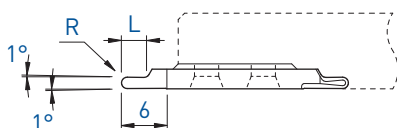
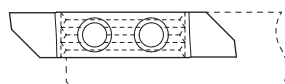


L



R



R	L	Art. N°	TiAlN			Art. N°	TiAlN		
			TiN	TiN	N (μm20)		TiN	TiN	N (μm20)
0.25	1.5	-				747-R0.25	■	■	■
0.40	2	-				747-R0.4	■	■	■
0.50	2.5	737-R0.5	■	■	■	747-R0.5	■	■	■
0.60	2.5	737-R0.6	■	■	■	747-R0.6	■	■	■
0.75	3	737-R0.75	■	■	■	747-R0.75	■	■	■
0.80	3	737-R0.8	■	■	■	747-R0.8	■	■	■
1.00	4	737-R1.0	■	■	■	747-R1.0	■	■	■

7XX-XX-B



Sur demande pour serrage type B, voir page 1.03  
 Wahlweise mit B-Spannsystem, siehe Seite 1.03  
 On request for B clamping system, see page 1.03